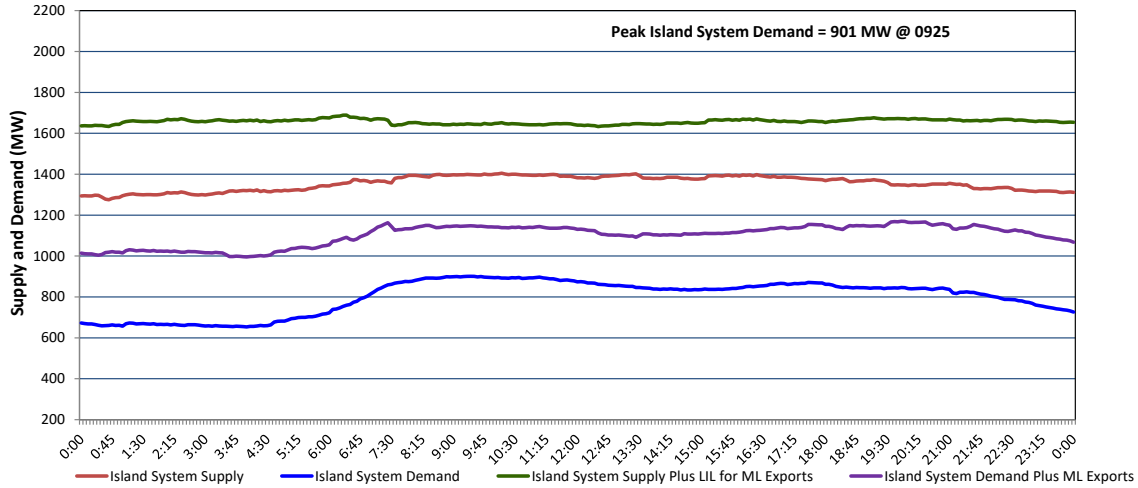


**Newfoundland Labrador Hydro (NLH)
Supply and Demand Status Report Filed Monday, May 11, 2026**

**Section 1
Island Interconnected System - Supply, Demand & Exports
Actual 24 Hour System Performance For Friday, May 08, 2026**



Island Supply Notes For May 08, 2026

- A As of 1326 hours, February 05, 2026, Cat Arm Unit 2 available at 57 MW due to forced derating (67 MW).
- B As of 0800 hours, March 29, 2026, Holyrood Unit 3 unavailable due to planned outage (150 MW).
- C As of 1513 hours, April 16, 2026, St. Anthony Diesel Plant available at 7.7 MW due to forced derating (9.7 MW).
- D As of 1857 hours, April 17, 2026, Stephenville Gas Turbine available at 25 MW due to forced derating (50 MW).
- E As of 1527 hours, May 01, 2026, Holyrood Unit 1 available but not operating 166 MW (170 MW).
- F As of 0800 hours, May 06, 2026, Holyrood Unit 2 unavailable due to planned outage 40 MW (170 MW).
- G As of 1052 hours, May 06, 2026, Bay d'Espoir Unit 1 unavailable due to planned outage (76.5 MW).
- H As of 1052 hours, May 06, 2026, Bay d'Espoir Unit 2 unavailable due to planned outage (76.5 MW).

**Section 2
Island Interconnected System - Supply, Demand & Outlook**

Sat, May 09, 2026	Island System Outlook ²	Seven-Day Forecast	Island System Daily Peak Demand (MW)	
			Forecast ⁸	Adjusted ⁶
Island System Supply: ⁴	1,354 MW	Saturday, May 9, 2026	940	890
NLH Island Generation: ^{3,7}	1,015 MW	Sunday, May 10, 2026	900	850
NLH Island Power Purchases: ⁵	85 MW	Monday, May 11, 2026	995	945
NP and CBPP Owned Generation:	215 MW	Tuesday, May 12, 2026	1,065	1,015
LIL/ML Net Imports to Island: ⁹	39 MW	Wednesday, May 13, 2026	1,000	950
7-Day Island Peak Demand Forecast:	1,065 MW	Thursday, May 14, 2026	1,015	965
		Friday, May 15, 2026	960	910

Island Supply Notes For May 09, 2026

- Notes:
1. Generation outages for running and corrective maintenance are included. These are not unusual for power system operations. They generally do not impact customer supply. Hydro schedules outages to system equipment whenever possible to coincide with periods when customer demands are low and sufficient supply reserves are available. However, from time to time equipment outages are necessary and reserves may be impacted.
 2. As of 0800 Hours.
 3. Gross continuous unit output.
 4. Gross output from all Island sources (including Note 3).
 5. NLH Island Power Purchases include: ML Imports, Exploits Generation, Rattle Brook, Star Lake, Wind Generation and capacity assistance (when applicable).
 6. Adjusted for interruptible load and the impact of voltage reduction when applicable.
 7. Due to limitations inherent in the design of combustion turbines, the output of combustion turbines may be reduced in the event that ambient temperatures exceed the threshold required for full rated output. This threshold is dependent on the design of each turbine.
 8. Does not include ML Exports.
 9. LIL Import sunk in the Island System. Actual LIL flows will be restricted by various system conditions including, but not limited to, Island Load, ML Exports and Avalon Unit status.

**Section 3
Island Peak Demand and Exports Information
Previous Day Actual Peak and Current Day Forecast Peak**

Fri, May 08, 2026	Island Peak Demand ¹⁰	9:25	901 MW
	Exports at Peak		247 MW
	LIL Net Imports to Island		1,590 MWh
Sat, May 09, 2026	Forecast Island Peak Demand		940 MW

- Notes: 10. Island Demand is supplied by NLH generation and purchases, LIL Imports plus generation owned and operated by Newfoundland Power and Corner Brook Pulp & Paper (Deer Lake Power, DLP).